

TRUCK HISTORY

SMR put its newest truck into service in 1996. In fact the new truck's first mission was on July 6, 1996. But how many trucks has SMR had? Here's some history of the trucks we've used over the years:

Prior to Truck #1 Ome Diaber's trailer was used to transport equipment. This truck was a 1942 Dodge army ambulance. It was called the 'Memorial Truck' in memory of Keith Jacobson who was killed in an avalanche at Source Lake in 1953. Young Jacobson's father was, at that time, the city editor for the PI and his mother was president of the Seattle P.T.A. Mr. and Mrs. Jacobson recognized our need for a rescue truck and were instrumental in raising funds for truck #1.

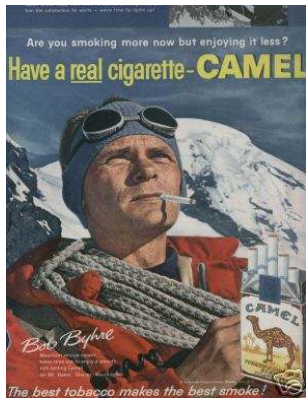
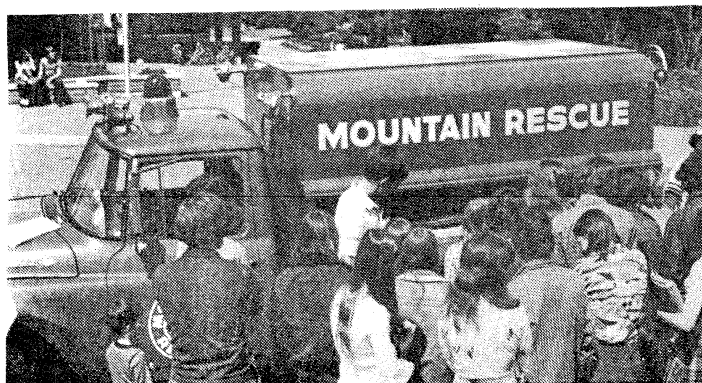


Truck #1 (Photo by Bob and Ira Spring)

Truck #1 was retired in 1961 after the drive line fell off on a rescue and it was decided it was time for truck #2.

Truck #2 (Photo by Sam Gardner)

Truck #2 was purchased new in 1961 from donations raised by MRC with another large donation coming from the Seattle P-I and Bob Byhre's Camel cigarette ads. The truck, an International 3/4 ton, was again dedicated to Keith Jacobson. She served MRC faithfully for 17 years until it was sold to the Skykomish Fire Department where it will probably serve another 17 years.



Truck #3 was probably the finest Mountain Rescue vehicle in the northern hemisphere at the time. It was a 1977 GMC crew cab with a total cost of over \$18,000. The majority of the



contributions came from large Washington corporations with many other individuals helping out also. The truck was officially dedicated to the memory of Al Givler, a great mountain rescuer who loved life, climbing and his fellow man.

(Truck #3 in 1978 (Photo by Sam Gardner)



That was the history up to 1978. Truck #3 served SMR for eighteen years, 1978 - 1996. Truck #3 was donated to Olympic Mountain Rescue and replaced by Truck #4, a spiffy new 1996 Ford F350 crew cab - with a total price about almost five times that of Truck #3.

Truck #4 in 1996 (Photo by Bill Rengstorf)