



SEATTLE MOUNTAIN RESCUE

AN ORGANIZATION DEDICATED TO SAVING LIVES THROUGH SEARCH AND RESCUE AND MOUNTAIN SAFETY EDUCATION

LETTER FROM THE CHAIRMAN

At the beginning of 2006 all SAR members in King County received notification from King County of new federal requirements, tied to funding, that all SAR volunteers will have to take; the NIMS ICS 100 and ICS 700 certifications. This action has a due date of September 30 2006. King County has also required that all SAR volunteers re-submit their emergency worker applications by May 30, 2006 in order to ensure that all of their SAR volunteers were properly cleared and certified.

There have been a few reminders of this throughout the year and perhaps that was not sufficient. We have just received the list of volunteers that have complied with this request and it shows a significant number of you have not. This puts Seattle Mountain Rescue as a unit in a tenuous position. If you have not complied, beginning October 1st 2006 you will no longer be eligible to turn out for SAR missions and will have to reapply with King County which will even further your ability to go into the field. For better or worse, these requirements are here to stay!

If you haven't completed these requirements and want to continue to be an active field member with SMR (and we hope you do!) you can download the King County re-application form and locate the link to take the NIMS ICS 100 and 700 test by going to the SMR website in the "Members Only" section and clicking on the links on the right side under the "SMR Roster" link. Also please feel free to contact one of the SMR folks listed below and let them help you through the process of submitting the paperwork and getting ICS certification.

Even if you missed the May deadline for re-application, its still not too late, we would still like to get this done in a timely manner so that we can keep you on the roster and continue to help those who are in need. Your participation in SMR is valued and we would hate to lose you over something that is relatively painless to accomplish!

If you have completed these requirements Great! If not someone will be calling in the next day or so to see if we can help. Also, if you are lacking any other training or certifications there is a SAR Academy being held on October 28 & 29.

Thanks!!

Timmy Williams, Chairman, Seattle Mountain Rescue

MISSION REPORTS FROM SEPTEMBER

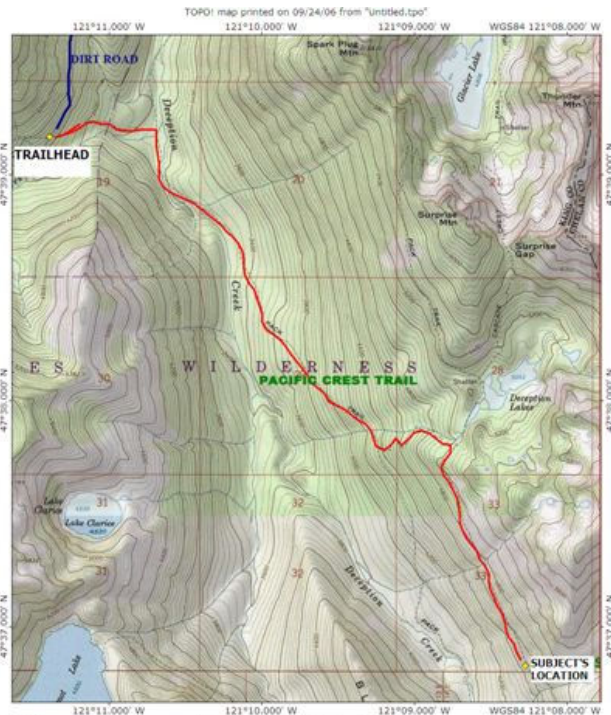
**SEPTEMBER 19-20, 2006
DEM-06-2851
CARRYOUT OF INJURED
TRAIL WORKER FROM
DECEPTION LAKE AREA**

The page went out around 1530 (Thu, Sept 19, 2006) for a 19 YO male with an injured leg South of Deception Lake on the Pacific Crest Trail (PCT). The subject was part of an approximately 15 person trail crew (combination youth/adult) from Northwest Youth Corps that was to be in the field for a week working on the trail. SAR Base camp was at the Skykomish Ranger Station. Steve A. arrived at base camp around 1730. Two teams of ESAR members and Steve were ready to go in the field before the SMR truck or the ESAR van arrived. A Cascade litter and wheel were borrowed from the Skykomish Fire Department. The SMR truck arrived around 1815 as the teams were leaving for the field. There was a 20 mile (1 hour) drive on dirt road from base camp to the trailhead. The first 2 teams were in the field at 1930. The first team of 5 led by Steve arrived at the subject's camp (approx 5.5 miles from trailhead) at 2200. The subject's leg was already splinted by the reporting party. Three persons from the trail crew were enlisted to help with the first 1-1/2 miles of the evacuation. On the way back to the trailhead the first litter team was met by several other teams coming up to help including 10 members from Snohomish County. There was a river crossing (ford) about 1 mile from the trailhead. At the river crossing, there were approximately 25 persons helping with the evacuation. The subject was back to the trailhead at 0345 and back to base camp at 0500 (Fri, Sept 20, 2006).

MANHOURS (SMR only): 47.5

MILEAGE (SMR only): 330

Steve



**SEPTEMBER 21, 2006
DEM-06-2878
SEARCH FOR HIKERS NEAR
BARING**

The mission paged out at approximately 2100 hrs. The mission was for two lost female hikers near Index Creek (Baring, WA). Base camp was at the fire station in Baring. The women had called 911 by cell phone and their GPS cell phone coordinates were available from the dispatcher. The coordinates indicated that the subjects were off-trail within 1/2 mile from their vehicle. A team of seven SMR/ESAR members was dispatched to the field along with SAR Coordinator Deputy Kathy Decker. The subjects were located by voice checks soon after the team went in the field. The women were prepared to spend the night (packs, tent, sleeping bags) but got lost and they panicked after it got dark. Both of the women had firearms with them. Deputy

(Continued on page 3)

(Continued from page 2)

Decker approached first and made sure the firearms were secured safely. It was a short walk back out to the vehicles. Gary Y. and Johnson D. from SMR were in the field and Kecia B. was Intown.

Gary Y.

MANHOURS: 15 **MILEAGE:** 120

King County sent out a page at 1844 hrs for a

**SEPTEMBER 25, 2006
DEM-06-2919
RESCUE OF LOST HIKER ON
TIGER MOUNTAIN**

missing hiker on Tiger Mountain. Russ A., Steve A., Dave R., and Seth B. responded to the mission. Our hiker called in stating that she was on a road at the "6 mile marker." Coordinates from E911 put her between the Tiger Mountain Trail and Westside road, North of fifteen mile creek. We found her on the Westside road, hugging milepost 6. She had left highpoint, hiked to Poo Poo, took the road to Tiger Summit, then the road to West tiger 1, down to Hidden Forrest trail, stopping when she reached the West side road. I put the trip at 26-30 miles. Kecia B. was Intown.

Seth B.

Tonight's mission was my fourth that we have

COMMENT FROM SETH

been helped by the county providing the phone's Latitude and Longitude. I do not know how the system works, but each of these times the format of the coordinates has been the same and the location helpfully accurate. Tonight's coordinates were at least .18 miles from the subject's location, but close enough to indicate which road she was on. The coordinates from E-911 calls are given in degrees and decimal degrees: Seven digits for latitude and eight for longitude. I don't know which datum. To recap the popular map data: U.S. Geological Society maps and Green Trails

maps use NAD 27 datum in Degrees and Minutes. They also have UTM lines. Most consumer GPS units default to Degrees, Minutes and Decimal minutes in the WGS84 datum. A Lat/Long will look like: 47deg 37.237' 121 deg 59.634'. A subject reading the display from their GPS will most likely use this format. When the first digit following the whole degrees (47 or 121 in much of East King County) is 6, 7, 8 or 9, you have been given coordinates in degrees and decimal degrees format. In this format, 64% of the time either latitude or longitude (or both) will have that telltale digit. I-90 Mile 19-40 the Longitude ranges from 121.6 to 122.0, so a decimal degrees location in that area will be obvious. So, 121.8xxxx is in degrees. degrees, 121 375 could be either. When you can't know, I like to plot both. Differences between WGS84 and NAD27 range up to hundreds of feet, I'm told. Often that is close enough. *Seth B.*
The initial page for a hiker with an in-

For information on the E-911 system go to:
Wireless 911 Coverage in WA: <http://emd.wa.gov/2-e911/wireless/04-cvr-maps.htm>
Wikipedia: <http://en.wikipedia.org/wiki/E911>

**SEPTEMBER 29, 2006
DEM-06-2953
HIKER WITH INJURED
ANKLE ON GUYE PEAK
TRAIL, ALPENTAL**

jured ankle on Cave Ridge went out around 1330, and due to a low response (middle of the workday is hard), a second page went out at 1410. Snoqualmie Pass Fire reached the patient, about a mile up the Cave Ridge trail from Alpentel and with a first team of SMR and ESAR, including two deputies began bringing down the patient. Though the terrain was nontechnical, the trail was

(Continued on page 4)

(Continued from page 3)

steep, narrow, and rocky enough to warrant belaying the litter with a single line. At 1630 another team arrived to assist with the carryout. The mission went smoothly, and everyone returned to base by 1800. Doug C. and Kecia B.

were Intown with Doug H., Gary Y., Steven A. and Dave R. responding. Seth B. and Karl H. signed up with ESAR and Seth was the overall Base O/L.

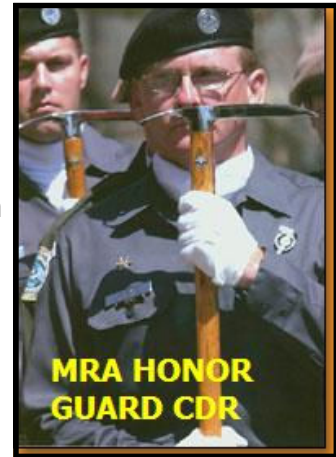
SMR Hours: 15 SMR Mileage: 230
(Gary Y.)

TIM KOVACS RECEIVES THE NASAR SERVICE AWARD



Congratulations to MRA's Tim Kovacs for being honored with the NASAR Service Award at the 34th Annual Conference and Exhibition in Austin, TX. The award was established in 1985 by the NASAR Board of Directors to recognize the person or unit who has made the most significant contribution to NASAR during the previous year or longer period of time. The award is granted solely on merit. It may be granted posthu-

mously. It does not have to be granted every year. Originally called the NASAR Service Award, it was renamed after Lois Clark McCoy in July of 2002. Tim Kovacs is a member of Central AZ Mountain Rescue/ Maricopa County Sheriff's Mountain Rescue, the Commander of the MRA/NASAR International Honor Guard and MRA Past President, 1998-2000.



OCT 19TH - MONTHLY MEETING

Please mark your calendars and plan to attend the Board Meeting on Thursday, October 19th starting at 7:00 p.m. at Fire Station Number 9 in Newcastle - 12412 SE 69th Way. Meetings are usually preceded by a social hour around 6 p.m. at a local spot to be announced by pagers and the lister.

FALL SAR ACADEMY

SAR Academy will be Saturday October 28 and Sunday October 29, 2006. At minimum, trainings required for county and state minimum certification of SMR volunteers will be provided. These include:

- First aid (usually good for 2 or 3 years)
- CPR (usually good for 1 year; may be good for 2 years)
- Blood borne pathogens (good for 2 years)

(Continued on page 5)

- Crime Scene (good for 3 years)
- Helicopter (good for 2 years)
- Intro to search & rescue (new members do once)

There is no charge for classes at the SAR Academy. We don't yet know if there will be other optional trainings, such as van driver, first aid and CPR or EMT continuing education or practicals. SMR folks are not required to take SAR survival, SAR techniques, or Map and Compass, but you are welcome to take them. Location has not yet been determined. Many folks are due to update their trainings, so mark your calendars to hold the dates. Further information will be sent out on both your pagers and on the Yahoo E-group (Lister).

Gordy S., Training Chairman

ELIGIBILITY REQUIREMENTS AND PROCEDURES FOR FILING FUEL, TOLL, AND FERRY EXPENSE REIMBURSEMENT CLAIMS

Due to several recent out of county missions SMR has responded to, members have submitted claims for reimbursement of gas expenses now that gas prices have skyrocketed to over \$3 a gallon.

The Washington Administrative Code (WAC) [118-04-360](#) outlines the proper procedures for filing gas claims using Form EMD-036. ([Gas claims.doc](#)) A separate claim form must be completed by each individual, with receipts for your gas attached.

Make sure your claim is reasonable for the miles traveled. You can leave with a full tank and fill up on return for example. A copy of the SAR Roster should be attached and sent directly to the county SAR coordinators. Fuel may be reimbursed for all missions **out of county** lasting less than 24 hours including turnarounds, and for in county if you drive **more than 50 miles one**

way or if you drive more than **100 miles during the mission**. or if the mission lasts more than 24 hours. Training missions are not eligible for reimbursement however. For those living downtown in Seattle for example, a mission at Snoqualmie Pass or Skykomish could be more than 50 miles one way.

Anyone using either of the unit vehicles for missions where you go out of county, or in county either lasting more than 24 hours or where you drive more than 100 miles, please take note of these procedures. Please see that any receipts for either the truck or the SUV get to the Vehicle Manager after the vehicle(s) are fueled up upon returning from applicable missions. For your private vehicles the same procedures apply.

Art F., Vehicle Committee

NOTES FROM THE LAST BOARD MEETING

The last Board Meeting on Sept. 21st was well attended but failed to have a quorum of board members present to conduct any business. One very interesting proposal was presented by Greg P. for upgrades to our vehicles. One proposal is to upgrade the Expedition's rate payload to accommodate three or four passengers and a driver plus gear by either adding stronger rear suspension springs

or inflatable air bags or both. The possibility of purchasing a single-axle cargo trailer for the Expedition was also proposed. And finally it was proposed to add graphic decals to the Blue Truck similar to the Expedition. Hopefully we can expect this to happen in the near future. Having a quorum of board members present at the October 19th meeting would allow this to be voted on.

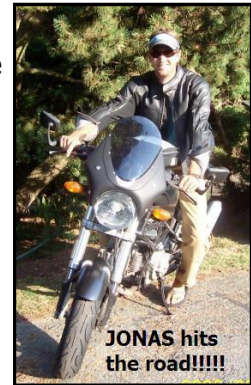
HEARD AROUND THE CAMPFIRE



Jonas B. grew up in Seattle and left when he was 18 for college. He went first to Vermont then and then finished up at Prescott College in Arizona where he studied Education (major in Wilderness Leadership and minor in Environmental Ed.). He started his SAR work with the Yavapai County Sheriff's Back-country

SAR Unit in Prescott. Jonas then spent a lot of time climbing in the Southwest and abroad (Kenya, Mexico, Spain, France, and Sweden) and traveled to Mt. Kenya to help outfit and train the Mt. Kenya SAR team. He met his lovely wife Brandi in Prescott and decided to move to Seattle where Brandi attended Bastyr University to study Naturopathic Medicine. Jonas says he was happy to get back to WA and he joined SMR in 2000 and worked as the Director of Outdoor Education at Forest Ridge H.S., Bellevue. Most of his climbing and outdoor adventuring took place with students all around the NW, SW, the West and Mexico. The Beans have now moved to McCall, ID for the simple reason of wanting to live a mountain lifestyle. They are starting a medical clinic out of their house and Brandi is now a licensed N.M.D. They both plan on skiing, boating, hiking, and climbing a lot throughout Idaho and the Sawtooths. Jonas plans on joining Valley

County SAR which is a small SAR group working in a county of 7,000 people. He went to his first meeting and it reminded him of his SAR team in AZ. Jonas also intends to explore the possibilities of joining IMSARU (Idaho Mtn Search and Rescue Unit) which is a MRA team out of Boise but Boise is 2.5 hours away. Jonas will be working with Brandi as the office manager until they get the practice up and running then he would like to start an outdoor school in McCall and run wilderness trips for schools and for their clinic. The idea of bringing nature back to Naturopathic Medicine has some appeal to them. Jonas has also been added to the School District's substitute list here in McCall. If SMR folks are in the area or want some great skiing and boating, they have a spare bedroom.



Reinhold DÖRFLINGER, the President of the Austrian Mountain Rescue Service (Österreichischen Bergrettungsdienst) retired last month after

(Continued on page 7)

heading the 874-member organization for the past 15 years. Reinhold was one of our guests at the June 2001 Spring Meeting at Alpental.



Our Communications Chairman **Bill D.** left last month on his second attempt to do the grand tour of the Canadian Rockies and this time got as far as Banff before running in to snow as shown on his blue van. Too bad he forgot to take his snowshoes! He's back now exploring the Middle Fork - Pratt River drainage.

Dylan J. and Forrest M. (along with a third non-SMR friend) spent a short week in the Bugs in mid-August. In between some bad weather, they climbed the NE ridge of Bugaboo Spire, Paddle Flake Direct on McTech Spire, the Beckey-Chouinard on South Howser and, of course, the W. Ridge of Pigeon spire, which is an obvious con-tender for the title of "World's Coolest 5.4". They hiked in to the climber's camp ground at night and the next morning at dawn were treated to a grandstand view of a helicopter pick-off on the standard route on Snowpatch Spire. From what they heard, the subjects were part of a 6-person party from an east coast university. One of them dropped a camera on the way up, then attempted to retrieve it on rappel after returning from the summit, and broke his ankle. (Pendulum? Rap off end of rope? Nobody seemed to know) The injured guy and the faculty advisor spent a cold night out and were chopped off at first light. Rescue was performed by CMH (the heli-skiing company) which has their main lodge in the valley below, according to the hut guardian, they get a lot of practice (average one rescue a week during the summer), and it showed in the speed with which they pulled this off. (Forrest M.)

OFFICERS 2006		
CHAIRMAN:	TIMMY WILLIAMS	
VICE CHAIRMAN:	DOUG HUTTON	
TREASURER:	DOUG HUTTON	
REC'D SECRETARY:	CHERYL DREVECKY	
ELECTED BOARD MEMBERS		
THROUGH 2006	THROUGH 2007	THROUGH 2008
JONAS BEAN	KECIA BRUCE	JOHN WICK
SETH BROTHERS	GREG PROTHMAN	RUSSELL ANSHELL
AJ RITTER	DAVE RUSHO	JOSH FARRIS
COMMITTEE ASSIGNMENTS, AREAS OF RESPONSIBILITY		
BERGTRAGE EDITOR	DAVE RUSHO	
COMMUNICATIONS	BILL DAVIS, DARREN EMMONS, BILL RENGSTORF	
ELT	DOUG CALEY, GREG PROTHMAN	
EQUIPMENT	JOHN WICK	
FINANCE	CHARLES ZWICK	
LEGAL COUNSEL	WARREN THOMPSON	
MEDICAL ADVISOR	DR. GEOFF FERGUSON	
MEMBERSHIP/MENTORING	JOSH FARRIS	
NEWSLETTER/BULLETIN	ART FARASH, KECIA BRUCE	
PUBLIC RELATIONS	GREG PROTHMAN	
RESCUE	GREG PROTHMAN	
RESCUE VEHICLES	ART FARASH, BILL DAVIS	
RIGGERS COMMITTEE	GORDY SMITH, RUSS ANSHELL	
ROSTER/STATISTICS	GARTH BRUCE	
SAFETY EDUCATION		
SMR LISTER	BILL DAVIS	
SMR WEBSITE	STEVE ALLEN, ANN ELLEN	
TRAINING	GORDY SMITH	

MRA REGIONAL TRAINING ON SATURDAY, OCT. 7th

October 7th – WMRA Regional Training at Ranger Rock near Greenwater from 0800–1600 followed by a post training BBQ from 1700–2000 at the ranger Creek Airstrip where camping is available. Technical Training will include Patient Packaging, Litter Vacuum Splinting, Knot Passes and Transitions under tension, Pickoff/Edge Management, Highline Carriage Systems and Low Angle Systems. Bring your personal rigging gear (Helmet, harness, gloves, slings/purcells, 6 rescue carabiners), Lunch and Drinks (Water is not available at Ranger Rock). Hosted by Tacoma Mountain Rescue. Please RSVP to your Team WMRA Delegate Bill Davis at 425-888-1125 or email at

BillDavis14@comcast.net.

The SMR Web Newsletter has adopted a new style this month with the banner adopted from our vehicle decal logos which you will also see on the new website. We hope all our readers will be pleased with this change.

Your articles, photos and stories are always welcome. The Editor at:

SMRnews@gmail.com